

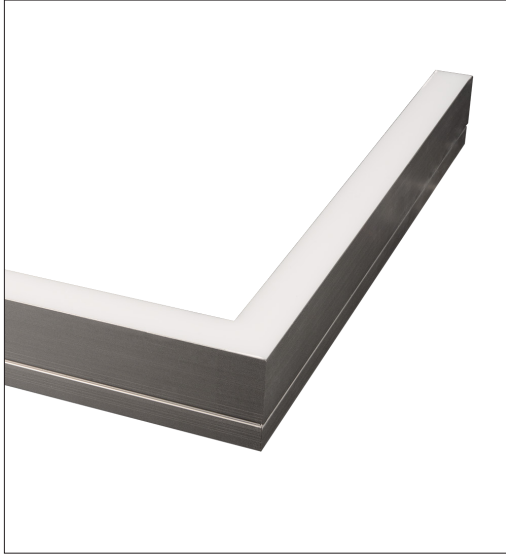
# EK3 Aluminium - RGBW

Mid Power LED 24 Vdc - Pitch 8,3 mm

**ALDABRA**  
LUCE CONTEMPORANEA

## Submittal

Project: \_\_\_\_\_ Date: \_\_\_\_\_  
 Product Type: \_\_\_\_\_ Product Code: \_\_\_\_\_  
 Ordering Info: \_\_\_\_\_



## Product Description

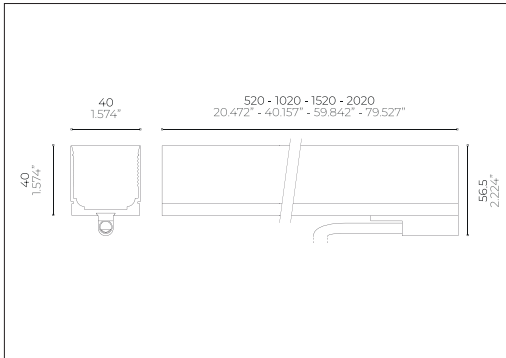
Professional modular recessed linear lighting systems for floor or step lighting. Suitable for indoor, outdoor and underwater applications. Made of extruded aluminium alloy UNI6060 natural anodized finish, or stainless steel AISI 316L and nanopolymer resin that ensures a complete waterproofing and glass-like transparency with perfect light uniformity.



## Light Source

Light Source	Mid Power LED LM 80 COMPLIANT
Colour Temperature (CCT) !	RGBW
LED Pitch	8,3 mm (0.326")
Board LED Cutting Pitch	50 mm (1.97")
Power	19,2 W/m (5.843 W/ft)
Colour Rendering Index	> 90
Chromatic Selection	Mac Adam 2-Step
Light Source Efficiency	lm/W
Fixture Luminous Flux	lm/m (lm/ft)
LED Type	_____

## Technical Drawing



## Power Supply

Voltage	24 Vdc Constant Voltage
Dimming	PWM
Control Systems Compatibility	DALI; DMX
Driver	Remote

## Fixture

Materials	Aluminium Anticorodal EN AW-6060; Resin
Body Finishes !	Anodized Aluminium
Weight	2450 g/m (1.646 lb/ft)
Power Supply Cable	1m (3,28ft) - 2xAWG18 (Red;Black) + 3xAWG20 (R/b, G/b, B/b)
Optics !	_____
Diffusers	Opal; Transparent
Screens	_____

## Installations



## Temperature and Durability

LED Lifetime T <sub>80</sub> 25°C	> 50000 h (TM21 L80 B10 @50000 h)
Fixture Lifetime	> 50000 h
T <sub>80</sub> Performance	25°C (77°F)
T <sub>80</sub> Operative	-30 ÷ 50 °C (-22 ÷ 122 °F)
Body Temperature	< 90 °C (194 °F)
Surface Temperature	≤ 65 °C (149 °F)

## Installation

Electrical Insulation Class	III
IP Protection Degrees	IP66; IP68
Impact Resistance	IK10
Driveability	_____
Walkability	300 kg (660 lb)
Certifications	CE; UL listed
Normative	EN60598-1; EN60598-2 and its parts; UL 676; CSA C222 No. 89-15; UL 2108; UL 1598/C250-08

! Note: contact the factory for custom CCT, optics, finishes and lengths



750°C

AQA STOPLEX

A A+ A++

## Note:

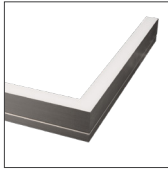
- Power supplies, control&dimming devices and fixing kits must to be orderd separately. - Aldabra power supply consumption is equal to 15% of the fixture nominal power.  
 - Specifications are subject to change without notice. - Photometric data available at [www.aldabra.it](http://www.aldabra.it) - Aldabra, all rights reserved.

# EK3 Aluminium - RGBW

Mid Power LED 24 Vdc - Pitch 8,3 mm

## Part Number

example: **EK3.21.D91A1.1**



### Length & Power <sup>1</sup>

- EK3.21** 520 mm / 1.706 ft - 9,6 W
- EK3.22** 1020 mm / 3.346 ft - 19,2 W
- EK3.23** 1520 mm / 4.986 ft - 28,8 W
- EK3.24** 2020 mm / 6.627 ft - 38,4 W

### Optical Features <sup>1</sup>

- .D** Opal Diffuser
- .T** Transparent Diffuser

### CCT <sup>1</sup>

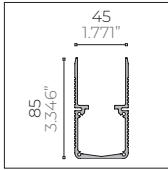
- 91** RGBW

### Finishes <sup>1</sup>

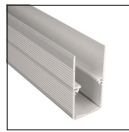
- A1.1** Anodized Aluminium

Notes: \_\_\_\_\_

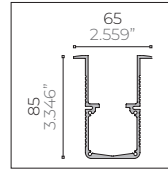
## Recessing Box



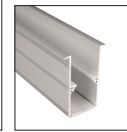
### Type A Anodized Aluminium Trimless Recessing Box



- CSF.0053.0** 520 mm / 1.706 ft
- CSF.0054.0** 1020 mm / 3.346 ft
- CSF.0055.0** 1520 mm / 4.986 ft
- CSF.0056.0** 2020 mm / 6.627 ft

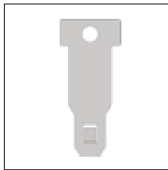


### Type B Anodized Aluminium Recessing Box with Trim

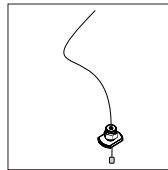


- CSF.0057.0** 520 mm / 1.706 ft
- CSF.0058.0** 1020 mm / 3.346 ft
- CSF.0059.0** 1520 mm / 4.986 ft
- CSF.0060.0** 2020 mm / 6.627 ft

## Recessed Installation Accessories



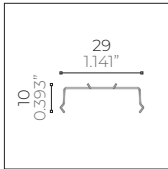
- ACC.0019.0**  
Tool for pulling out the module from the recessing box



- ACC.0028.0**  
Safety steel wire for ceiling installation for preventing accidental fall



- ACC.0064.0**  
Couple of end caps for EK recessing box type A - B



- ACC.0077.0**  
Fixing springs



- ACC.0336.0**  
Alignment Kit for Recessing Box GX3-EK3 type A/B

## Generic Accessories



- ACC.0147.0**  
IP68 Waterproof connection box with gel  
4 channels - 5 poles