

EK2 Stainless Steel - RGBW

Mid Power LED 24 Vdc - Pitch 8,3 mm

ALDABRA
LUCE CONTEMPORANEA

Submittal

Project: _____ Date: _____
Product Type: _____ Product Code: _____
Ordering Info: _____



Product Description

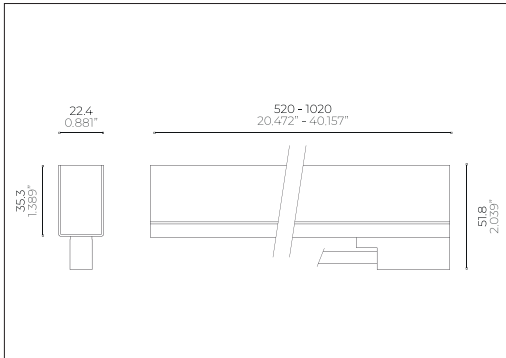
Professional modular recessed linear lighting systems for floor or step lighting. Suitable for indoor, outdoor and underwater applications. Made of extruded aluminium alloy UNI6060 natural anodized finish, or stainless steel AISI 316L and nanopolymer resin that ensures a complete waterproofing and glass-like transparency with perfect light uniformity.



Light Source

Light Source	Mid Power LED LM 80 COMPLIANT
Colour Temperature (CCT) !	RGBW
LED Pitch	8,3 mm (0.326")
Board LED Cutting Pitch	50 mm (1.97")
Power	19,2 W/m (5.843 W/ft)
Colour Rendering Index	> 90
Chromatic Selection	Mac Adam 2-Step
Light Source Efficiency	lm/W
Fixture Luminous Flux	lm/m (lm/ft)
LED Type	_____

Technical Drawing



Power Supply

Voltage	24 Vdc Constant Voltage
Dimming	PWM
Control Systems Compatibility	DALI; DMX
Driver	Remote

Fixture

Materials	Stainless Steel AISI 316L; Resin
Body Finishes !	Satin Stainless Steel
Weight	1700 g/m (1.142 lb/ft)
Power Supply Cable	1m (3,28ft) - 2xAWG18 (Red;Black) + 3xAWG20 (R/b, G/b, B/b)
Optics !	_____
Diffusers	Opal
Screens	Transparent

Installations



Temperature and Durability

LED Lifetime T_a 25°C	> 50000 h (TM21 L80 B10 @50000 h)
Fixture Lifetime	> 50000 h
T_a Performance	25°C (77°F)
T_a Operative	-30 ÷ 50 °C (-22 ÷ 122 °F)
Body Temperature	< 90 °C (194 °F)
Surface Temperature	≤ 65 °C (149 °F)

Installation

Electrical Insulation Class	III
IP Protection Degrees	IP66; IP68
Impact Resistance	IK10
Driveability	_____
Walkability	300 kg (660 lb)
Certifications	CE; UL listed
Normative	EN60598-1; EN60598-2 and its parts; UL 676; CSA C222 No. 89-15; UL 2108; UL 1598/C250-08

! Note: contact the factory for custom CCT, optics, finishes and lengths



750°C

AQA STOPLEX

A A+ A++

Note:

- Power supplies, control&dimming devices and fixing kits must to be orderd separately. - Aldabra power supply consumption is equal to 15% of the fixture nominal power.
- Specifications are subject to change without notice. - Photometric data available at www.aldabra.it - Aldabra, all rights reserved.

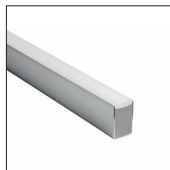
EK2 Stainless Steel - RGBW

Mid Power LED 24 Vdc - Pitch 8,3 mm

ALDABRA
L U C E C O N T E M P O R A N E A

Part Number

example: **EK2.21.D91S1.0**



Length & Power ¹

- EK2.21** 520 mm / 1.706 ft - 9,6 W
- EK2.22** 1020 mm / 3.346 ft - 19,2 W

Optical Features ¹

- .D** Opal Diffuser
- .T** Transparent Diffuser

CCT ¹

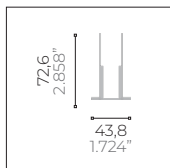
- 91** RGBW

Finishes ¹

- S1.0** Satin Stainless Steel

Notes: _____

Recessing Box

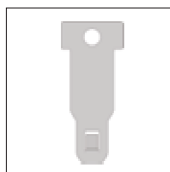


Type A Stainless Steel AISI 316L Trimless Recessing Box

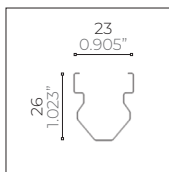


- CSF.0105.0** 520 mm / 1.706 ft
- CSF.0106.0** 1020 mm / 3.346 ft

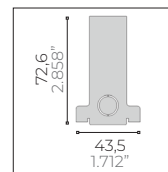
Recessed Installation Accessories



- ACC.0019.0**
Tool for pulling out the module from the recessing box



- ACC.0074.0**
Fixing springs



- ACC.0146.0**
Couple of End Caps for Stainless Steel Recessing Box

Generic Accessories



- ACC.0147.0**
IP68 Waterproof connection box with gel
4 channels - 5 poles