

STIK Spot - Monochromatic

COB LED 24 Vdc

ALDABRA
LUCE CONTEMPORANEA

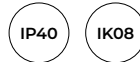
Submittal

Project: _____ Data: _____
 Product Type: _____ Product Code: _____
 Ordering Info: _____



Product Description

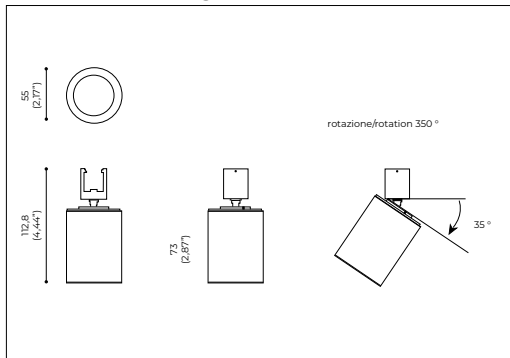
Innovative patented lighting system for indoor environments, featuring light bars supported or fixed to tensioned cables or rigid low-voltage electrified elements. A perfect solution for electro-colored aluminium and polycarbonate, the Stik system is available with direct or indirect lighting, as well as fixtures suitable for office use. The system can include spotlights for accent lighting.



Light Source

Light Source	COB LED
Colour Temperature †	2700K; 3000K; 4000K
Power	10 W
Colour Rendering Index	> 90
Chromatic Selection	Mac Adam 2-Step
Light Source Efficiency	lm/W
Fixture Luminous Flux	lm
Central Beam Candle Power (CBCP)	_____
LED Type	_____

Technical Drawing



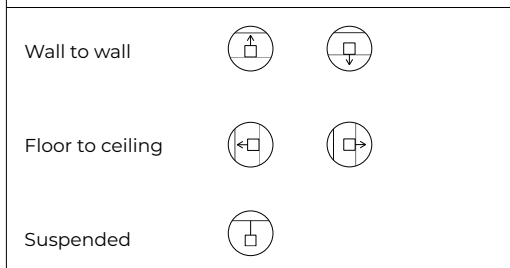
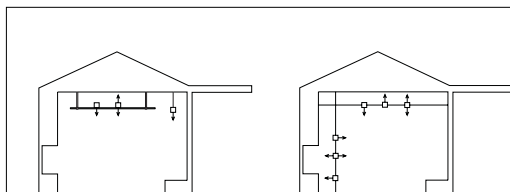
Power Supply

Voltage	24 Vdc Constant Voltage
Dimming	PWM
Dimming Systems Compatibility	0-10V; 1-10V; DALI; DMX
Driver	Remote

Fixture

Materials	Aluminium Anticorodal EN AW-6060; PC
Body Finishes †	Anodized Aluminium; Black Anodized Aluminium; Champagne Anodized Aluminium
Weight	250 g (0.551 lb)
Power Supply Cable	_____
Optics †	Narrow 15°; Medium 25°; Wide 46°
Diffusers	_____
Screens	_____

Installation



Temperature and Durability

LED Lifetime T ₈ 25°C	> 50000 h (TM21 L80 B10 @50000 h)
Fixture Lifetime	> 50000 h
T ₈ Performance	25°C (77°F)
T ₈ Operative	-30 ÷ 50 °C (-22 ÷ 122 °F)
Body Temperature	< 90 °C (194 °F)
Surface Temperature	≤ 65 °C (149 °F)

Installation

Electrical Insulation Class	III
IP Protection Degrees	IP40
Impact Resistance	IK08
Driveability	_____
Walkability	_____
Certifications	CE
Normative	EN60598-1 ; EN60598-2 and its parts

! Note: contact the factory for custom CCT, optics, finishes and lengths



650°C A A+ A++

Note:

- Power supplies, control&dimming devices and fixing kits must to be orderd separately. - Aldabra power supply consumption is equal to 15% of the fixture nominal power.
 - Specifications are subject to change without notice. - Photometric data available at www.aldabra.it - Aldabra, all rights reserved.

STIK Spot - Monochromatic

COB LED 24 Vdc

ALDABRA
LUCE CONTEMPORANEA

Part Number

example: **STI.91.F27A1.0**



Length & Power¹

STI.91 Ø 55 mm / 2,165" - 10 W

Optical Features¹

- .M** Narrow 15°
- .F** Medium 25°
- .W** Wide 46°

CCT¹

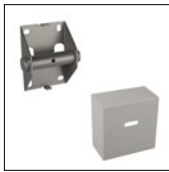
- 27** 2700
- 30** 3000
- 40** 4000

Finishes¹

- Z2.0** Champagne Anodized
- A1.0** Anodized Aluminium
- B3.0** Black Anodized

Notes:

Installation Accessories



ACC.0321.0
Anchoring Design base for wall or ceiling cables in matt white painted steel.



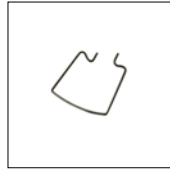
ACC.0322.0
Stretcher Design base for wall or ceiling cables in matt white painted steel.



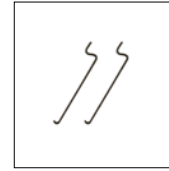
ACC.0323.0
Tie-rod in nickeled copper - steel 3 mm 20 Ampere 15 metres



ACC.0324.0
Tie-rod in nickeled copper - steel 3 mm 20 Ampere 50 metres



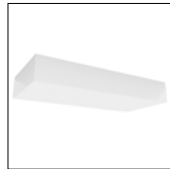
ACC.0325.0
Fixing springs lamp-cable (8 pieces)



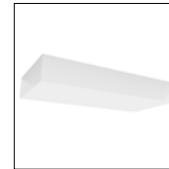
ACC.0326.0
Fixing springs lamp-lamp (8 pieces)



ACC.0327.0
Ceiling fixing bracket 60 cm (23,622")



ACC.0328.0
Box with power supply 100W 90/305vA 24Vdc white



ACC.0329.0
Box with power supply 240W 90/305vA 24Vdc white



ACC.0331.0
Couple of supporting bars 250 cm (98") in anodized aluminium



ACC.0332.0
100 cm (39") suspension long rods (couple) for supporting bars



ACC.0333.0
Allen key for Stretcher Design



ACC.0087.0
Couple of transparent power supply cables 150 cm (59") with white rose



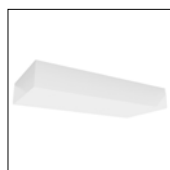
ACC.0338.0
Basic stretcher and anchoring kit (couple) for wall - ceiling cables in galvanized steel



ACC.0339.0
Adjustment potentiometer



ACC.0340.0
100 cm (39") powered long rods (couple) for supporting bars



ACC.0341.0
Box with power supply 320W 90/295vA 24Vdc white

General Informations:

Kindly note that atmospheric agents (such as lightnings, etc), electrostatics charges or disturbances on the installation not caused by Aldabra lighting fixtures and Led drivers indicated by Aldabra itself, may cause damages on the fixtures. It is necessary that the electrical installation where the LED lighting fittings and their power supply units and control gears are installed must be equipped with proper devices for the protection and suppression of transient phenomena (SPD, isolation transformer, etc...). Such devices must be coordinated with the other protections of the installation; on this theme, it's necessary to refer to the electrical installations norms which are in force in each country.