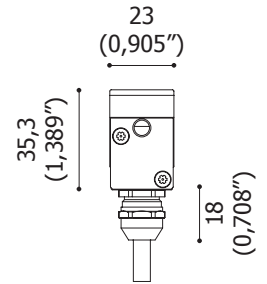




LF07

PMMA

Caratteristiche / Features

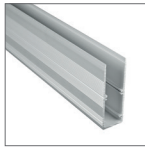


LF07 MID POWER LED 24 Vdc CON SCHERMO OPALE / WITH OPAL DIFFUSER (minimo 6 pezzi / 6 pieces minimum)

	3000 K	4000 K		RGB
	1020 mm (40,157") 10 W	LF07.01.D30P1.0	LF07.01.D40P1.0	1020 mm (40,157") 18 W LF07.01.D90P1.0
	2020 mm (79,527") 20 W	LF07.02.D30P1.0	LF07.02.D40P1.0	2020 mm (79,527") 36 W LF07.02.D90P1.0

ACCESSORI / ACCESSORIES

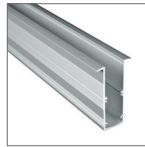
Cassaforma senza bordi (tipo A)
Trimless recessing box (type A)



1020 mm (40,157") **CSF.0046.0**
2020 mm (79,527") **CSF.0048.0**

altezza / height: 76,5 mm (3,011")
larghezza / width: 27,6 mm (1,086")

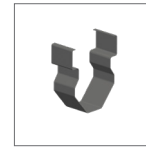
Cassaforma con bordi (tipo B)
Recessing box with trim (type B)



1020 mm (40,157") **CSF.0050.0**
2020 mm (79,527") **CSF.0052.0**

altezza / height: 76,5 mm (3,011")
larghezza / width: 27,6 mm (1,086")

Molla di fissaggio
Fixing spring



ACC.0074.0

Coppia di testate per cassaforma
Couple of end caps for recessing box



ACC.0060.0

Kit di fissaggio opale per installazioni
antiefrazione e carrabili
Opal fixing kit for anti-vandal and drive-over
applications



ACC.0061.0

Kit di allineamento casseforme tipo A e B
Alignment kit for recessing boxes type A and B



ACC.0003.0

Spina di giunzione per luce continua
(solo per applicazioni in interno)
Plug connector for continuous line
(only for indoor applications)



ACC.0062.0

Muffola lineare 3 poli
Linear waterproof connection box 3 poles



ACC.0005.0

Muffola lineare 5 poli
Linear waterproof connection box 5 poles



ACC.0147.0

ALIMENTATORI / POWER SUPPLY UNITS

110-305 Vac - 60 W - IP67 - CE - UR - SELV	PSU.0016.0
110-295 Vac - 150 W - IP67 - CE - UR - SELV	PSU.0010.0
110-305 Vac - 240 W - IP67 - CE - UR - SELV	PSU.0011.0

SCHEMI DI COLLEGAMENTO / CONNECTION DIAGRAMS

24 Vdc monochromatic	C1 - I1
24 Vdc RGB	R1