

# SAX Symmetric - Monochromatic

Mid Power LED 24 Vdc - Pitch 1,8 mm

**ALDABRA**  
LUCE CONTEMPORANEA

## Submittal

Project: \_\_\_\_\_ Date: \_\_\_\_\_  
 Product Type: \_\_\_\_\_ Product Code: \_\_\_\_\_  
 Ordering Info: \_\_\_\_\_



## Product Description

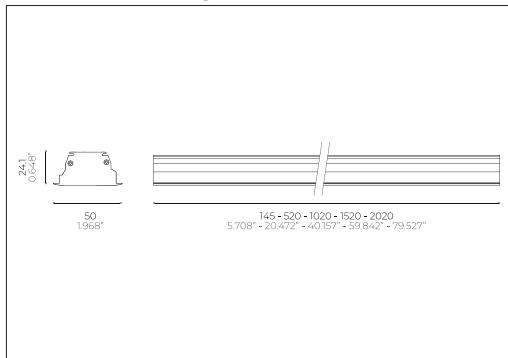
Professional modular recessed linear lighting systems for symmetric or asymmetric illumination. Suitable for indoor, outdoor and underwater applications. Made of extruded aluminum alloy UNI 6060 with a natural anodized finish, and UV-resistant nanopolymer resin that ensures a complete waterproofing and a glasslike finish.



## Light Source

Light Source	Mid Power LED LM 80 COMPLIANT
Colour Temperature (CCT) !	2700K; 3000K; 4000K
LED Pitch	1,8 mm (0.059")
Board LED Cutting Pitch	12,5 mm (0.492")
Power	20 W/m (6.097 W/ft)
Colour Rendering Index	> 90
Chromatic Selection	Mac Adam 3-Step
Light Source Efficiency	lm/W
Fixture Luminous Flux	lm/m (lm/ft)
LED Type	_____

## Technical Drawing



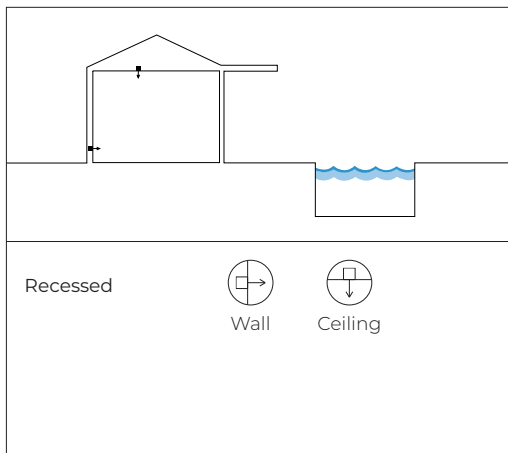
## Power Supply

Voltage	24 Vdc Constant Voltage
Dimming	PWM
Dimming Systems Compatibility	0-10V; 1-10V; DALI; DMX
Driver	Remote

## Fixture

Materials	Aluminium Anticorodal EN AW-6060; Resin
Body Finishes !	Anodized Aluminium
Weight	650 g/m (0.436 lb/ft)
Power Supply Cable	1m (3,28ft) - 2xAWG18 (Red;Black)
Optics !	_____
Diffusers	Satin
Screens	_____

## Installations



## Temperature and Durability

LED Lifetime $T_a$ 25°C	> 50000 h (TM21 L80 B10 @50000 h)
Fixture Lifetime	> 50000 h
$T_a$ Performance	25°C (77°F)
$T_a$ Operative	-30 ÷ 50 °C (-22 ÷ 122 °F)
Body Temperature	< 90 °C (194 °F)
Surface Temperature	≤ 65 °C (149 °F)

## Installation

Electrical Insulation Class	III
IP Protection Degrees	IP40
Impact Resistance	IK05
Driveability	_____
Walkability	_____
Certifications	CE; UL listed
Normative	EN60598-1; EN60598-2 and its parts; UL 676; CSA C222 No. 89-15; UL 2108; UL 1598/C250-08

! Note: contact the factory for custom CCT, optics, finishes and lengths



750°C

A A+ A++

## Note:

- Power supplies, control&dimming devices and fixing kits must to be orderd separately. - Aldabra power supply consumption is equal to 15% of the fixture nominal power.  
 - Specifications are subject to change without notice. - Photometric data available at [www.aldabra.it](http://www.aldabra.it) - Aldabra, all rights reserved.

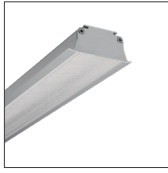
# SAX Symmetric - Monochromatic

Mid Power LED 24 Vdc - Pitch 1,8 mm

**ALDABRA**  
LUCE CONTEMPORANEA

## Part Number

example: **SAX.13.D30A1.0**



### Length & Power <sup>1</sup>

- SAX.13** 520 mm / 1.706 ft - 10W
- SAX.14** 1020 mm / 3.350 ft - 20 W
- SAX.15** 1520 mm / 4,986 ft - 30 W
- SAX.16** 2020 mm / 6,627 ft - 40 W

### Optical Features <sup>1</sup>

- .D** Asymmetric Optics 91°

### CCT <sup>1</sup>

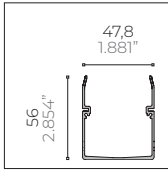
- 27** 3000K
- 30** 3700K
- 40** 5200K

### Finishes <sup>1</sup>

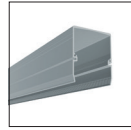
- A1.0** Anodized Aluminium

Notes: \_\_\_\_\_

## Recessing Box



### Type A Anodized Aluminium Trimless Recessing Box

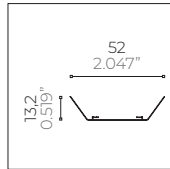


- CSF.0073.0** 520 mm / 1.706 ft
- CSF.0074.0** 1020 mm / 3.350 ft
- CSF.0075.0** 1520 mm / 4,986 ft
- CSF.0076.0** 2020 mm / 6,627 ft

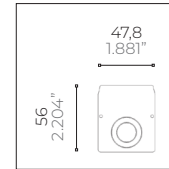
## Recessed Installation Accessories



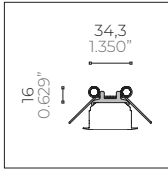
- ACC.0003.0**  
Alignment kit for recessing box



- ACC.0070.0**  
Fixing spring for recessing box and shelf for Sax



- ACC.0075.0**  
Couple of end caps for for recessing box for Sax type A



- ACC.0079.0**  
Fixing spring for false ceiling for Sax

## General Informations:

Kindly note that atmospheric agents (such as lightnings, etc), electrostatics charges or disturbances on the installation not caused by Aldabra lighting fixtures and Led drivers indicated by Aldabra itself, may cause damages on the fixtures. It is necessary that the electrical installation where the LED lighting fittings and their power supply units and control gears are installed must be equipped with proper devices for the protection and suppression of transient phenomena (SPD, isolation transformer, etc...). Such devices must be coordinated with the other protections of the installation; on this theme, it's necessary to refer to the electrical installations norms which are in force in each country.